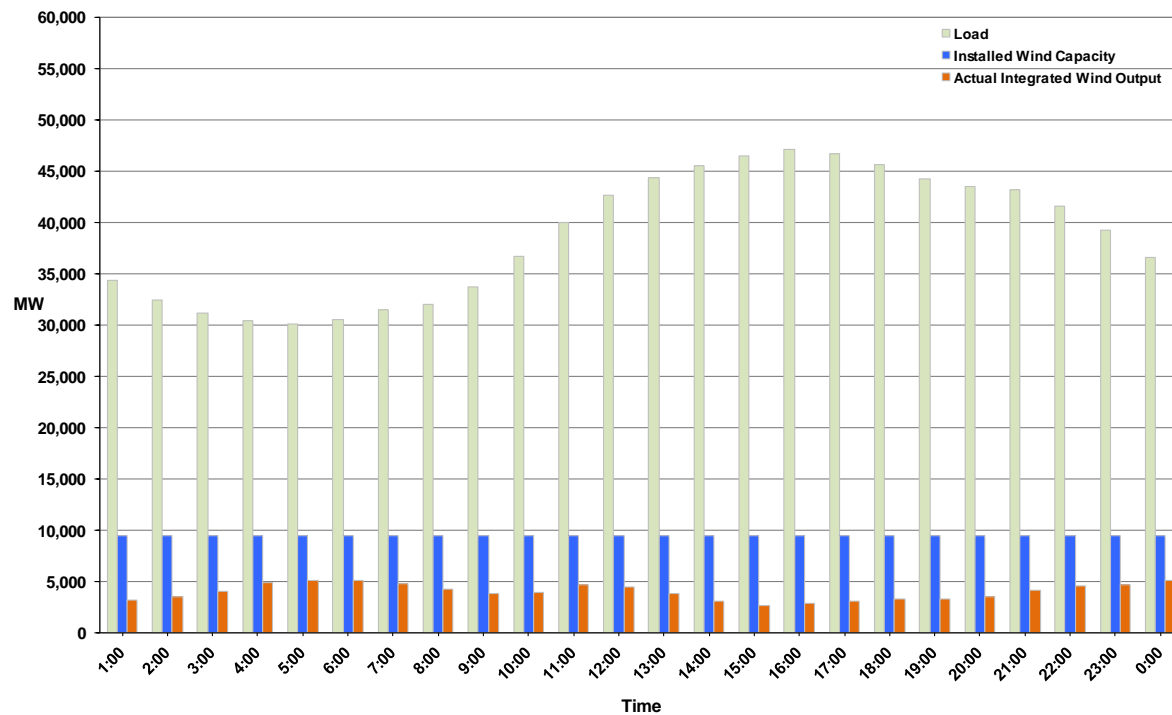




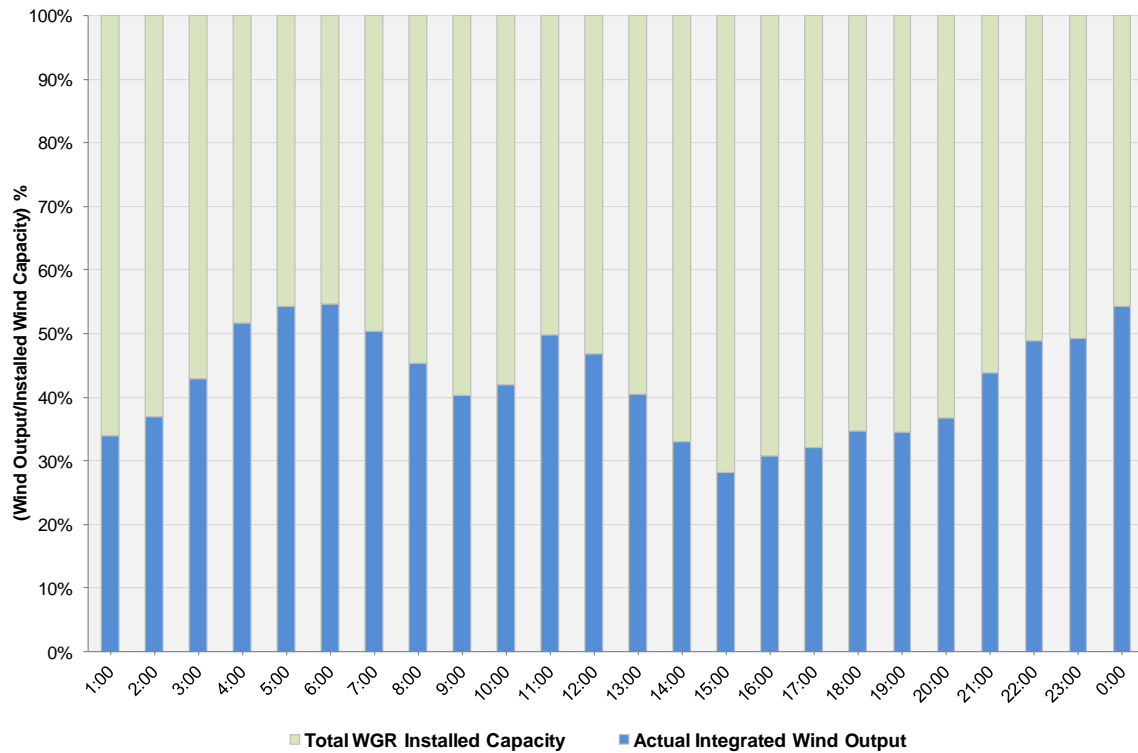
## ERCOT Grid Operations Wind Integration Report: 09/17/11

|                      |                  |
|----------------------|------------------|
| Peak Load            | <b>47,140 MW</b> |
| Load Peak Hour       | <b>16</b>        |
| Wind over Peak       | <b>2,903 MW</b>  |
| Wind Record 06/19/11 | <b>7,355 MW</b>  |
| Max Wind Value       | <b>5,336 MW</b>  |
| Wind Peak Time       | <b>23:59:56</b>  |
| Wind Integration %   | <b>15.09%</b>    |

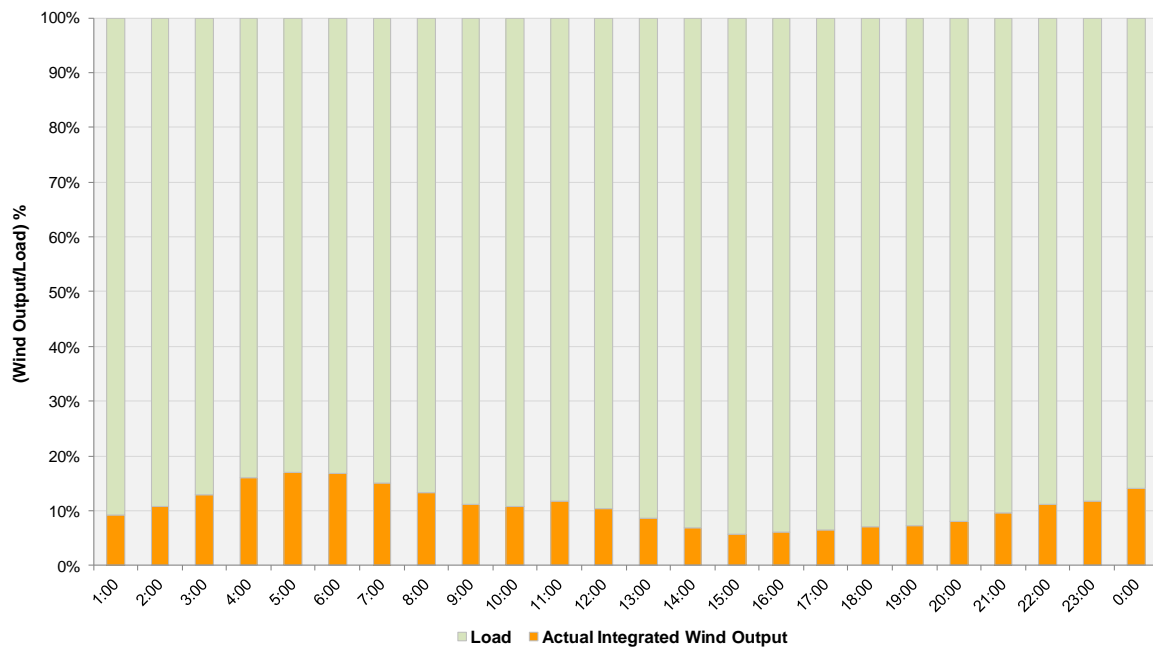
**Hourly Average Actual Load vs. Actual Wind Output  
09-17-2011**



**Actual Wind Output as a Percentage of the Total Installed Wind Capacity**  
**09-17-2011**



**Actual Wind Output as a Percentage of the ERCOT Load**  
**09-17-2011**



ERCOT Load vs. Actual Wind Output 9/10/2011 - 9/17/2011

